



# InFocus

July 2011 • Vol. XX #4

Wisconsin Chapter of the Photographic Society of America

## Calendar of Events - 2011-2012

### Sunday, October 23, 2011

Waukesha State Bank, Oconomowoc

- 9 AM - Business Meeting
- BYO Shows - Munising Spring Outing, PSA Conference Photos and Others
- Discuss 2012 Turkey Run Outing Details
- Afternoon Program - Marty Welter - Rodeo and Sport Photography

### Sunday, January 15, 2012

Waukesha State Bank, Oconomowoc

- 9 AM - Business Meeting
- Showing of 2010 PSA Chapters Showcase
- Select 12 images for 2011 PSA Chapters Showcase (bring 2 digital images each)
- BYO Shows
- Afternoon Program - TBA

### Sunday, March 18, 2012

Waukesha State Bank, Oconomowoc

- 9:00 AM - Business Meeting
- Region 21 Individual Showcase - Projected and Print (bring 2 images total in any format or combination of formats)
- BYO Shows
- Afternoon Program - Photoshop Elements by Mark Southard

### Friday - Sunday, April 20-22, 2012

Photo Outing, Turkey Run State Park, IN

- Friday Evening - Business Meeting and discuss photo locations
- Show 2011 Region 21 Club Showcase
- Saturday Evening - Show and Tell - your photos from Turkey Run State Park and Covered Bridges, plan for Sunday AM

### Reservation Form for October 23rd Meeting

Waukesha State Bank, Oconomowoc, Wisconsin

Registrations should reach us by October 19th. The cost for this meeting (which includes lunch) is **\$8.00**.

Make check payable to **PSA Wisconsin Chapter** and mail to:

**Nancy Klemp, 1216 Laurel Lane, Oconomowoc, WI 53066.**

Name: \_\_\_\_\_ Number attending: \_\_\_\_\_

Phone: \_\_\_\_\_ Email: \_\_\_\_\_

## PSA Region 21 Directors' Report

### All Region 21 members:

After a very hot, rainy, and stormy beginning to summer, hopefully everyone is now in the mood for some good weather, which should be coming soon, and is looking forward to getting out and obtaining some great images.

Remember the October meeting BYO subject is "Images from the Munising, Michigan outing and PSA Conference photos, or others" (for those who missed both of these excellent photographic experiences).

The 2010 PSA Region 21 Club Showcase **judging** is now **done**, with **all** of the clubs having judged all of the images at a club meeting over the winter months. It appears we had another group of superb images for everyone to judge. The final results, **some 15,000+ scores, are now being compiled and tabulated to determine individual and club scores and rankings.** Health problems at my end have slowed the final tabulation of results, but I am working on them and hope to complete them soon, and then get them typed up and distributed (by email this year, as a trial) to all club reps. Your patience will be appreciated.

We wish to give a special thank you to: Jackie Boyd of the Fox Valley Camera Club for continuing to receive the Club entry CD's and create the master CD's used in the Region 21 Club Showcase club judgings, and Peggy Blieze and Rick Builer of the In Focus Photo Club for doing much of the Club score sheet averaging and compilation to help determine the Individual and Club scores and rankings.

**NOTE:** Schedule, rules, and entry forms have already been sent to all club reps for the **2011** Region 21 Club Showcase entry, so start selecting/shooting your images for the selection of 7 images at your club's September meeting.

We wish to extend a very warm welcome to our newest members who have joined PSA and the Wisconsin Chapter since the **last** newsletter was published.

**June Hirst**  
**Linda Marquardt**  
**Center for Photography at Madison (Club)**  
**Cedarburg, WI**  
**Brookfield, WI**  
**Madison, WI**

A very special welcome to our newest Wisconsin **Club**, and the individual members. We would like to have many of you join and participate as PSA Individual members.

We hope you will become active in all of the activities available to you, starting with the 2011 Region 21 Club Showcase.

We strongly encourage all new members to join a local photo club and attend as many PSA, Chapter and Club meetings, functions, and activities as possible, to take full advantage of the many benefits available to you through your PSA membership.

We urge ALL members and member clubs to fully review the PSA Services and Activities listings shown in the January, April, July, and October issues of the PSA Journal, and to make use of the multitude of resources, programs, and functions available to everyone.

For additional information visit the Chapter and PSA websites: [www.psawisconsin.org](http://www.psawisconsin.org) and [www.psa-photo.org](http://www.psa-photo.org)

**For any new member who feels they would like or could use some "help or guidance" with their photography, a Mentor Program will be available soon. Anyone interested in this, please contact me directly -- [ddfrisque@frontier.com](mailto:ddfrisque@frontier.com)**

We hope that many of you are already planning to attend the PSA Conference in Colorado Springs, Colorado, in September. Hope to see many of you there. More details on page 8.

Hope you'll have a wonderful summer and fall, with great shooting and super images. We hope to see many of you October 23rd.

### PSA Region 21 Co-Directors

**Donald Frisque**, APSA, PPSA  
[ddfrisque@frontier.com](mailto:ddfrisque@frontier.com)  
**Signe Emmerich** [200oaks@gmail.com](mailto:200oaks@gmail.com)

## RANdom Thoughts From the Chair

After living 3/4 of a century, one begins to get a more focused view of what is really important in our journey through life. It is not important how much we have, but what we have done, and what we leave for others. "Riches and things" do not guarantee a good life or character. What we do, and how and why we do it, speaks volumes about who we are and what we have done to contribute our share in creating a better world.

"It's not the chances we take, it's the choices we make, that determine our destiny" - . . . . .

"Watch your thoughts, for they become your words. Choose your words, for they become actions. Understand your actions, for they become habits. Study your habits, for they will become your character. Develop your character, for it becomes your destiny." - . . . . .

"When all the trees have been cut down, when all the animals have been hunted, when all the waters are polluted, when all the air is unsafe to breathe, only then will you discover you cannot eat money." - Cree teaching

"This is the beginning of a new day. You have been given this day to use as you will. You can waste it or use it for good. What you do today is important because you are exchanging a day of your life for it. When tomorrow comes, this day will be gone forever. In it's place is something you have left behind . . . . let it be something good." - . . .

"Be the change you wish to see in the world" - Gandhi

"You'll always miss 100% of the shots you don't take" - . . .

## BYO

**BYO** MEANS **BRING YOUR OWN IMAGES**

**THIS MEETING'S "SHOW" THEMES - UPPER PENINSULA OF MICHIGAN FROM SPRING OUTING, PSA 2011 CONFERENCE IMAGES, ANY OTHER IMAGES OF YOUR CHOICE**

With the age of digital photography now here, all of our future BYO shows will be presented by Digital Projection. This should enable anyone with a computer to put together a digital "show" using your **own** images.

Now you can make and bring your own image show for everyone to enjoy.

At all future meetings, we want each of you to bring your own "image show" on a jump drive (preferred) or CD. Size all images to 1024 w X 768 h pixels (max) at 100 ppi, 800 KB or less, in jpg format. We will allocate time at all meetings for the shows.

All of the shows, (each up to five minutes long), will be shown as one program in a series of "continuous" mini shows, which replaces the "old" slide shows. This is your chance to be creative, showcase your **best** images, and be as simple or as complex as you choose. **You** are in control of the images and content format.

We all enjoy seeing good images, so remember to BYO to every meeting.

### PSA-WI Executive Committee

**Don Frisque**, APSA, PPSA, Chairman & Region 21 Director, Northern Wisconsin  
[ddfrisque@frontier.com](mailto:ddfrisque@frontier.com)  
715.359.4350

**Signe Emmerich**, Vice-Chair & Region 21 Director, Southern Wisconsin  
[200oaks@gmail.com](mailto:200oaks@gmail.com)  
262.642.5641

**Linda Barrows (Marquardt)**, Secretary, [travel@tds.net](mailto:travel@tds.net)  
262.781.7831

**Nancy Klemp**, Treasurer  
[nklemp@wi.rr.com](mailto:nklemp@wi.rr.com)  
262.567.6780

**Kathy Brand**, Webmistress  
[Kathleen.brand@sbcglobal.net](mailto:Kathleen.brand@sbcglobal.net)  
262.657.3823

**Audrey Waitkus**, Editor  
*InFocus* Newsletter  
[backstage284mail-dnld@yahoo.com](mailto:backstage284mail-dnld@yahoo.com)  
920.458.9787

**Kathy Braun**, APSA, and  
**Gerry Emmerich, Jr.**, FPSA, GMPSA  
Special Counsel

### Committees

**Membership**, Signe Emmerich

**Programs and Historian**, Gerry Emmerich, Jr., FPSA, GMPSA

**Publications**, Audrey Waitkus

**Hospitality**, Nancy Klemp

**Showcases**, Don Frisque, APSA, PPSA

*InFocus*, official newsletter of the PSA-Wisconsin Chapter, is published five times a year and is included in Chapter membership dues paid by PSA members who join the PSA- Wisconsin Chapter.



*InFocus* and its contents are © 2011 by the Photographic Society of America and the PSA-Wisconsin Chapter. Material may not be reproduced without permission.

## PSA-WI Chapter Member Competitions and Awards

### Wisconsin Chapter Member Receives Prestigious PSA Distinction

The Photographic Society of America (PSA) is pleased to announce that **Gerald H. Emmerich, Jr., FPSA, GMPSA**, has received the **Grand Master Distinction (GMPSA)** in recognition of his photographic achievement record in International Exhibitions of photography, along with only eight other PSA members achieving this distinction worldwide. Formal presentation of their plaques will be made in September at the 2011 PSA International Conference in Colorado Springs, Colorado.

For the first time in the history of the Recognition of Photographic Achievement

(ROPA), successful candidates are being announced this month in each of the four categories: Grand Master (GMPSA), Master (MPSA), Excellence (EPSA) and Proficiency (PPSA).

. . . . For all of the necessary information about the updated ROPA program visit the PSA website, [psa-photo.org](http://psa-photo.org) or email the Director, Kristina Erin Kaye, APSA, PPSA, at [kris@kristinakaye.us](mailto:kris@kristinakaye.us)

*This article is reproduced with permission from the July 2011 issue of the PSA Journal, the official magazine of the Photographic Society of America, Inc. (PSA). For information on PSA membership, please write to PSA Headquarters, 3000 United Founders Blvd., Suite 103, Oklahoma City, OK 73112-3940.*

---

**Don Frisque, APSA, PPSA**, had an image accepted into the juried, Riverfront Arts Center, Stevens Point, Visions XIII Exhibit, from June 23 – July 31, 2011.

---

### Wisconsin Chapter Member Awards and Achievements Recognition

In each issue we will be publishing major medals, awards, recognitions, and photographic-related accomplishments of ANY and ALL members of the Chapter. Please send any and all of these directly to Audrey Waitkus, as soon as YOU receive or achieve any of the above. These will be compiled and presented in

each issue of the Newsletter. Again, only your participation, and submitting, will get into this listing. Hopefully this will help encourage more of us to participate in the many competition programs available at the many levels of PSA, as well as ANY other competition, exhibition, show, presentation, charity function, or other type of photographic events available.

## PSA-WI Chapter News

### PSA-WI Chapter History

Ellen Worzala, FPSA, served as the PSA Wisconsin Chapter's first Historian from 1995 to 2000. She wrote a brief account of the origins of the Chapter and a history of the Chapter's early years. In 2000, Gerry Emmerich became Chapter Historian and transcribed her account of the Chapter through 1995, and has added a year-by-year account through the present. The history will soon be available on the Chapter website.

### Wisconsin Chapter Dues

The PSA-WI Chapter dues year runs from June of 2011 to June of 2012. For dues information contact the Treasurer, Nancy Klemp [nklemp@wi.rr.com](mailto:nklemp@wi.rr.com). Also remember you must be a current member of the Photographic Society of America (PSA) to be eligible for membership in the Wisconsin Chapter.

### Election of Officers

During the weekend outing to Pictured Rocks National Lakeshore, the election meeting of the PSA Wisconsin Chapter was held on Friday, May 20, 2011, at the Days Inn in Munising, Michigan. At the meeting, Kathy Braun, APSA, Chairperson, Wisconsin Chapter Nominating Committee, moved that a unanimous ballot be cast for the slate of officers presented by the Chapter Nominating Committee; the motion was seconded and passed unanimously.

The following officers were elected to serve a two-year term, beginning at the conclusion of the 2011 PSA Conference on September 25, 2011 through the conclusion of the 2013 PSA Conference on September 21, 2013:

- Chairman, Don Frisque, APSA, PPSA
- Vice Chairperson, Signe Emmerich
- Secretary, Linda Barrows Marquardt
- Treasurer, Paul Moertl

## PSA-WI Chapter Activities

### Chapter Outing, Munising, Michigan, May 20-22

The PSA-WI outing offered outstanding photo opportunities for the 21 Chapter members who visited Munising, MI. There were spectacular scenic locations - Pictured Rocks National Lakeshore, Miner's Castle, Miner's Beach, Sand Point, Seney National Wildlife Area, Log Slide overlook, Grand Sable Dunes; there was water falling everywhere - Miners Falls, Munising Falls, Wagner Falls, and dozens more waterfalls; there

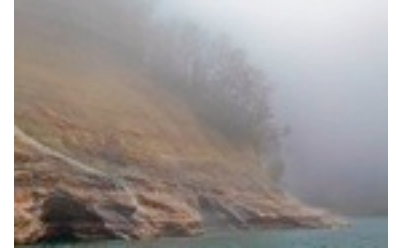
were spring wildflowers - acres of trilliums, trout lilies, spring beauties, and more; and there was ever-changing weather - morning fog, sometimes lasting until evening, rainstorms, and even some sunshine. All who travelled north to the shores of Lake Superior agreed that conditions were perfect for great photography. And, when the photography was finished for the day, the group met on Friday and Saturday evenings to share their photos and talk about their photo hot spots.



Wagner Falls  
Lenore Ryan



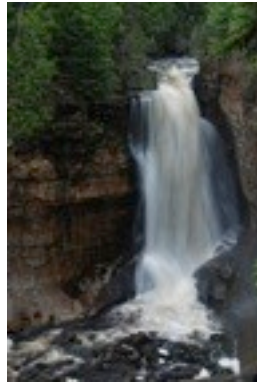
Tannery Falls HDR  
Paul Moertl



Bridal Veil Falls  
Judith Pannozo



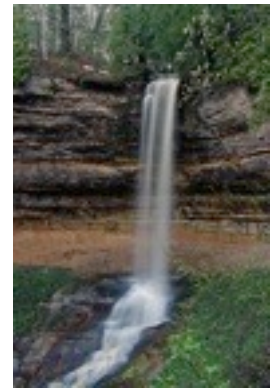
Horseshoe Falls  
Phil Waitkus



Miner's Falls  
Edna Pfeiffer



Scott Falls  
Phil Waitkus



Munising Falls  
Priscilla Farrell



Sable Falls  
Audrey Waitkus



Laughing Whitefish Falls  
Audrey Waitkus



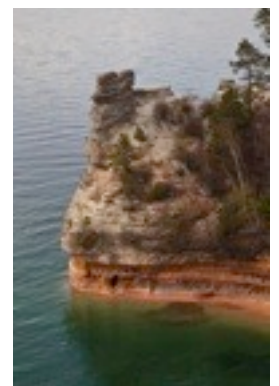
Miner's Beach Falls  
Gerry Emmerich



Au Train Falls  
Audrey Waitkus



Sand Point  
Ted Tousman



Miner's Castle  
Judith Pannozo



Reflections at Miner's Beach  
Bonnie DeLap



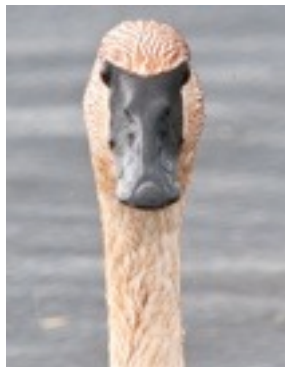
Au Sable Beach Walk  
Priscilla Farrell



Log Slide Overlook  
Gerry Emmerich



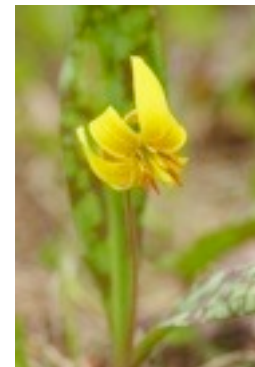
Shale Orange-Sky Blue  
Bonnie DeLap



Swan  
Ted Tousman



Seney Wildlife Refuge  
Gerry Emmerich



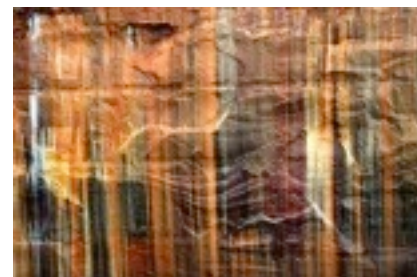
Trout Lily  
Paul Moertl



White Pelican  
Ted Tousman



Pictured Rocks  
Lenore Ryan



Pictured Rocks  
Lenore Ryan



Trillium  
Judith Pannozo



Marsh Marigolds  
Phil Waitkus



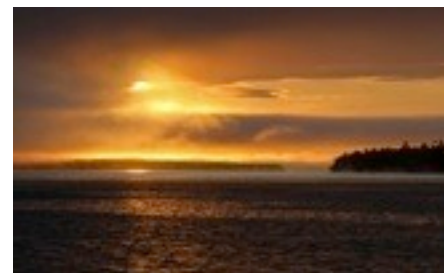
Magnolia  
Edna Pfeiffer



Tulips  
Edna Pfeiffer



Butterfly  
Paul Moertl



Munising Sunset  
Priscilla Farrell

## PSA-WI Chapter Sponsored Competitions and Awards

### WISCONSIN SCHOOLS WELL REPRESENTED IN COLORADO SPRINGS

The judging of the entries in the 2011 PSA Youth Showcase once again brought recognition to all the high schools in Wisconsin who had entries in the program. The entries sponsored by the Wisconsin Chapter led the way with twelve acceptances, one earning a 2<sup>nd</sup> Honorable Mention. Other sponsors were the Fox Valley Camera Club, the East Troy Viewfinders Camera Club, and the Photo Pictorialists of Milwaukee.

From the schools sponsored by the Chapter, the 2<sup>nd</sup> Honorable Mention was awarded to Lauren Gingold of Rufus King High School for WATERFALL IN WYOMING. Liviya David, also from King had THE ESCAPE accepted. Alexander Hamilton High School had three acceptances: Meghan Wagner's WEATHERED BY TIME, and two by Taylor Galaszewski, CLICHÉ and THE HIDE HOUSE. Hunter Graff from Marquette University High School also had two acceptances, TALL BOYS MUSIC and INCREDULOUS. The two acceptances from Pulaski High School were ONE STEP AT A TIME by Veronica Davis and APPLE HOLLER by Yesenia Maciel. Milwaukee High School of the Arts is represented by two prints of Mahdi Gransberry's, JOY and REFLECTIONS. The chapter also had an entry from Port Washington High School, thanks to Karl Hokanson. Alyssa Garbarek's print, BACKSTAGE AT THE SHOW, was accepted.

The Fox Valley Camera Club sponsored students from Appleton North, Appleton East, and

Kimberly high schools. From North, Jeffrey Coe's RED DOOR and Hollie Beckum's MIRROR, MIRROR ON THE WALL were accepted. Parker Sorensen from East had DARK BEAUTY accepted. Kimberly is represented by Kyra Vandenheuvel's UNCONDITIONAL LOVE and REBELLION, and Da Houa Vue's TRAIL OF NATURE.

The East Troy Viewfinders have two acceptances from East Troy High School, HOME FOR MANY by Nicole Pesek and HUMAN QUALITIES by Bridgette Hart.

Acceptances sponsored by Photo Pictorialists of Milwaukee include Madeline Riebe's CLUTCHING TO YOUTHFUL LIGHT from Grafton High School and ELIZABETH by Lana May from Nicolet High School.

Karl took it on himself to contact the photography teacher from Port Washington High School and have her become involved in the Youth Showcase. She is now looking forward to next year's showcase. The chapter has members around the state who could also further the program by visiting a local high school, showing the teacher a copy of a September PSA JOURNAL which features the winners, and getting the school involved. Use the PSA website for entry forms. Contact the PSA Youth Photography Showcase director, Kathy Braun, at [Pkzbraun@aol.com](mailto:Pkzbraun@aol.com) for assistance and information. It sure would be great if we had high schools from all over the state becoming part of the program.

## PSA-WI Member News

### Kathy Braun: "I'm a Photojournalist"

You might have seen in the news the story of a fire that destroyed a home in Grafton on June 1. The house was just the other side of the octagon barn. I was on my way to the store when I saw my neighbors on the side of the road. Then I saw the house on fire. I drove back and got my camera. I took about three dozen shots of the fire moving through the house. I called a friend at the NEWS GRAPHIC (our local paper) and told him I had these shots. He picked up my memory card and said he'd get it back to me the next day or so. The paper came out on Thursday. And there was one of my shots ABOVE THE FOLD! with a credit: Photo by Kathy Braun. It was almost half a page.





Photographic Society of America  
73rd Annual International Conference  
Colorado Springs, CO - Sept 18 - 24, 2011  
DoubleTree Hotel Colorado Springs, World Arena

Information about the Conference has been published in the February PSA Journal, and all successive issues. Be sure to review your monthly Journals for continuing information about registration, lodging, schedules, programs, classes, speakers, and tours for this major yearly PSA event, and start making your plans to attend. You will be able to visit the newly revised PSA website for registration and more details. **Fourteen PSA-WI Chapter members have already registered.**



Wisconsin Area Camera Club Organization  
Presents  
A Photography Workshop

## Birds of Prey

October 22nd, 2011 - Saturday - 11 AM to 3 PM  
Klug's Photo World  
4298 Hwy. 167, Hubertus, WI 53033

For information e-mail [kpw1255@aol.com](mailto:kpw1255@aol.com)  
or call (262) 628-1255  
or see the flyer attached with this newsletter

### **You should be a part of this newsletter!**

Send articles, ideas for articles, or related/appropriate photos to Audrey Waitkus at [backstage284mail-dnld@yahoo.com](mailto:backstage284mail-dnld@yahoo.com). Anything you send will be used as space and deadlines permit.

### **NOTICE TO MEMBERS:**

Chapter members may submit items for a FOR SALE/WANT column in the Newsletter, on a space available basis, for photographic related items only.

Please restrict your ad to a maximum of 250 total spaces.  
Submit ads for future issues to the Editor, Audrey Waitkus.



### **Directions to Waukesha State Bank 1227 Corporate Center Drive Oconomowoc WI**

From the East or West on I-94 -- take WI 67 North, exit 282, to the light at Pabst Farms Blvd. Turn left on Oconomowoc Drive, then left on Corporate Center Drive.

From the North or South take WI 67 to the light at Pabst Farms Blvd. Turn west on Oconomowoc Drive, then left on Corporate Center Drive.

On Corporate Center Dr., the Bank building is the second building on the left. Park on the south side of the building, and enter the doors at the SE area of the building. Meeting rooms are downstairs.

#### Nearby Lodging:

#### **Hilton Garden Inn**

1443 Pabst Farm Circle, 262-200-2222

#### **Staybridge Suites**

1141 Blue Ribbon Drive, 262-200-2900

#### **Country Pride Inn**

2412 Milwaukee Street  
Delafield, WI - Exit 287 on I-94, at Hwy.  
83 262-646-3300 (reasonable rates)